



2017 BHS Orchestra Audition Information

- There are four levels of orchestra at BHS, from easiest to most challenging: **Chamber, Concert, Philharmonic, and the Symphony Orchestra**. These four outstanding orchestras have the same goals: to help you grow as a musician and to create music at the highest level. The main differences between the orchestras are the difficulty of music and the opportunities to play in the full orchestra.
- **All incoming freshman** are required to audition. Incoming freshmen may audition on Level I, Level II, or Level III music. Level III is reserved for those wishing to audition for the Symphony (top group). These auditions will help us determine which group best suits your level. Everyone who signs up for orchestra will be placed in a group. Please don't fear these auditions, just make sure you prepare and do your best!
- **Current BHS orchestra students** have the option of auditioning on any of the music levels. Current BHS students who choose not to audition will be placed into Chamber Orchestra.

Please determine the level for which you plan to audition. The audition music for each group will include Scales and Etudes. The music for each group is clearly marked in the audition packets.

Everyone will play a scale, Etude 1, and the second Etude for your Level.

Level I – Chamber and Concert Orchestras - 1 octave scale, Etude 1, Level 1 Etude

Level II – Concert and Philharmonic Orchestras- 2 Octave scale, Etude 1, Level 2 Etude

Level III – Symphony- 3 Octave Scale, Etude 1, Level 3 Etude

Audition dates are as follows: May 15-18 These dates cannot be extended

Please call the BHS Orchestra office at 469-593-7028 or email Mr. Needham at craig.needham@risd.org if you have any questions! Regardless of your ability we look forward to making music with you next year! Please look carefully through this packet of information and let me know if you have any questions.

Mr. Needham

Mrs. Thornton

Mr. Pratt

Viola audition scales

Level 1, quarter=80, with vibrato



Level 2, quarter= 90



Level 3, quarter=100



Viola Etude 1

Level 1 - play 1st two lines using any fingerings
Level 2 and 3 - play all including upper notes and printed fingerings

Viola

♩=72

mf III

9 -3 Level 1 stop

17 0 -3 2 3 1 3 3 *p* III

25 -3 *f* III

Level 2,3 stop

Viola Etude 2,3

Level 2 end at m. 14, Level 3 play all

♩=90



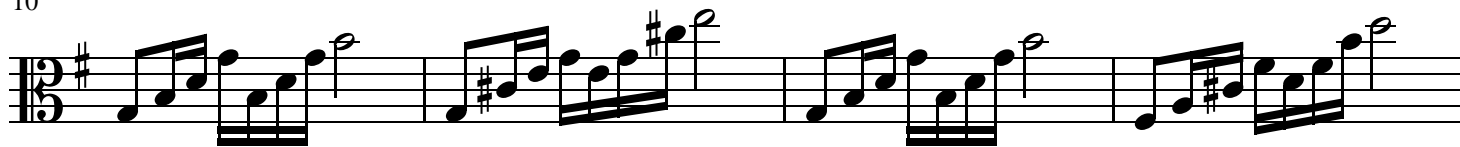
4



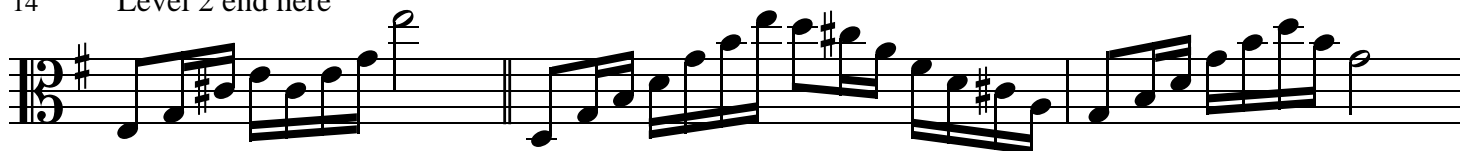
7



10



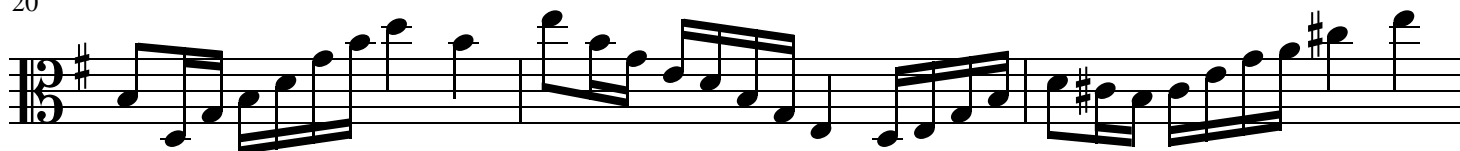
14 Level 2 end here



17



20



23

