

Cello Packet



2019 BHS Orchestra Audition Information

- There are four levels of orchestra at BHS, from easiest to most challenging: **Chamber, Concert, Philharmonic, and the Symphony Orchestra**. These four outstanding orchestras have the same goals: to help you grow as a musician and to create music at the highest level. The main differences between the orchestras are the difficulty of music and the opportunities to play in the full orchestra.
- **All incoming freshman** are required to audition. Incoming freshmen may audition on Level I, Level II, or Level III music. Level III is reserved for those wishing to audition for the Symphony (top group). These auditions will help us determine which group best suits your level. Everyone who signs up for orchestra will be placed in a group. Please don't fear these auditions, just make sure you prepare and do your best!
- **Current BHS orchestra students** have the option of auditioning on any of the music levels. Current BHS students who choose not to audition will be placed into Chamber Orchestra.

Please determine the level for which you plan to audition. The audition music for each group will include Scales and Etudes. The music for each group is clearly marked in the audition packets.

Decide which music suits you the best. You must play these levels to have a chance to qualify for these groups:

- Level I – Chamber and Concert Orchestras
- Level II – Concert and Philharmonic Orchestras
- Level III – Symphony

Audition dates are as follows: Liberty – May 8, Apollo JH – May 10, BHS – May 8-10 These dates cannot be extended. We will be coming to each Junior High campus to listen to auditions on the days listed above.

8th Graders from other schools

We are asking 8th graders not attending Apollo or Liberty to request a time to come and do a live audition at Berkner High School. Please email Mr. Needham at craig.needham@risd.org to set-up your time for the week of May 8-11.

Please call the BHS Orchestra office at 469-593-7028 or email Mr. Needham at craig.needham@risd.org if you have any questions! Regardless of your ability we look forward to making music with you next year! Please look carefully through this packet of information and let me know if you have any questions.

Cello Level 1

Use full bows and vibrato for scale

D Major, quarter=70



6

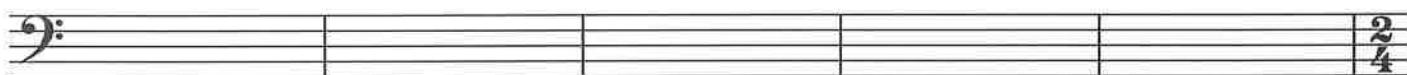
Thirds in D Major



11



15



20

Level 1 Etude, quarter=60



25



29



Cello Level 2

Use full bows and vibrato for scale

Quarter=70

5

10 Quarter=70

13 0 x2 0 x2 3

16

19

Cello Level 3

Use a full bow and vibrato for the scale

Quarter=70

6 2 3 2 1 -2 1 -2 1 -4 -4

12

22 Quarter=88 X2 1 3 x2 -2 1 x2 x2 x4 1 4 2 -1 4 *mf*

28 2 x4 1 0 1 1 4

33 4 1 4 1

37 4 2 0 4

42 *cresc. p* *fp* *mp*

45 *f*

47